

**Incoming 6th-Grade
Family Orientation Night
February 21, 2023
6:30-7:45 PM**

Welcome Everyone!



Administration Introductions...

Dr. Tyese Parnell, Principal

parnellt@aaps.k12.mi.us

Mr. Stephan Hogan, Assistant Principal

hoganst@aaps.k12.mi.us

Mr. Rick Weiler, Assistant Principal

weiler@aaps.k12.mi.us



Tappan Mission Statement

*The **mission** at Tappan is to come together to design a school commUNITY where everyone will have fun, love learning, want to excel, achieve to their potential and care for each other.*

Tappan's Student Affirmation Statement

As a student at TMS, it is important for you to know that you are loved and accepted for the unique individual you are. Please know you are important to every adult here at Tappan.

We love you and will always work with you to ensure your success as you continue to learn and grow.

Each day is a day of growth for you. You are smart, you are talented, you are beautiful and the Tappan team believes in you!

Always believe in yourself, be kind to others and yourself and always work hard to better yourself!

Have a great day of learning and growing! **We BELIEVE IN YOU!!!**

Tappan Middle School

- National School To Watch recipient
 - Academic Excellence; Developmental Responsiveness;
Socially Equitable; Norms, Structures, and Organizational Arrangements are in place
- Top 25 (out of 925) public middle schools in Michigan



**We
Appreciate
Our
AMAZING
PTSO!**



PTSO



- Jenn Monk-Reising President
 - Website: TappanPTSO.org



**Currently seeking new
board members for
the 2023 - 2024 PTSO!
Come make a
difference in the lives
of our students,
teachers and staff!**

PTSO SPONSORED PROGRAMS

6th grade T-shirts
6th grade Trip scholarships
7th grade trip scholarships
8th grade promo ceremony
8th grade promo party
8th grade trip scholarships
8th grade yearbook scholarships
Administration Discretionary Fund
Annual CO2 car project
Athletic Dept
Classroom subsidy
Creature Conservancy
Discretionary Fund (PTSO)
Field Trip Busing
Garden Committee
Grants
Hospitality
Magazine subscriptions
Math Counts
NAAPID
SEMMLAA

SAMPLE - Proposed budget 2021-2022

Income	
Annual Fund	45,500.00
Community Rewards Program	1,000.00
School Store Net Income	1,000.00
Spirit Sale Net Income	1,000.00
Tappan Players	1,500.00
Total Income	50,000.00
Expenses	
6th grade T-shirts	1,200.00
6th grade Trip scholarships	2,000.00
7th grade trip scholarships	1,000.00
8th grade promo ceremony	500.00
8th grade promo party	3,000.00
8th grade trip scholarships	10,000.00
8th grade yearbook scholarships	800.00
Administration Discretionary Fund	3,000.00
Annual CO2 car project	650.00
Athletic Dept	3,000.00
Bank charges and fees	150.00
Classroom subsidy	9,000.00
Creature Conservancy	800.00
Discretionary Fund (PTSO)	1,000.00
Dues	50.00
Field Trip Busing	2,500.00
Garden Committee	700.00
Grants	1,000.00
Hospitality	300.00
Insurance	1,000.00
Magazine subscriptions	600.00
Math Counts	300.00
NAAAPID	500.00
Office expenses	500.00
Printing and copying	400.00
SEMMLAA	600.00
software expenses	850.00
Tax Prep	550.00
Total Expenses	45,950.00

TAPPAN MIDDLE SCHOOL
PTSO
ANNUAL FUND

We
can do so much with
YOUR
Support!

WHY TO GIVE



Classroom



Community



Equity

HOW TO GIVE



Online



Check



QR Code

\$45,500



To support our students, teachers, staff and community, please donate today!



Thank YOU for your donation!

<https://tinyurl.com/tappanptso>



TAPPAN MIDDLE SCHOOL

PTSO

VOLUNTEER OPPORTUNITIES

PTSO Board

Fun Nights

School Store

Field Trips

NAAPID

Wellness Committee (Project Healthy Schools)



Honor Roll Parties

Apparel

Music Department

Tappan Players

Athletic Events

We need
your voice.



Annual
Background
Checks are
required for any
Family
volunteering.

For more information email

jmonkreising@gmail.com

Thank YOU !



Day in the Life of a TMS Middle Schooler



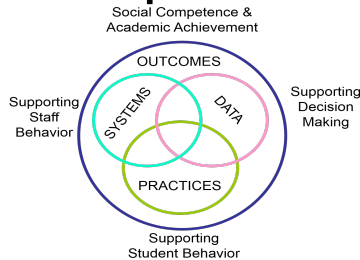
TMS Pillars

- **RESPECTFUL**
- **RESPONSIBLE**
- **SAFE**



Positive Behavior Intervention Support (PBIS)/ Developmental Design

PBIS- A program designed to reinforce the positive behaviors that we want students to exhibit, while addressing and providing support for behaviors that do not meet our expectations.



The ***Developmental Designs*** approach offers a teaching and learning framework that helps you hear and respond effectively to the needs of adolescents.



TMS School Hours

- School hours are **8:15 am - 3:03 pm**
- Doors open at:
 - **7:55 am for breakfast**
 - **8:05 am for everyone**
- No before or after care provided
- Students are expected to leave school grounds by **3:15 pm**, unless they are in an adult-supervised activity for which they are registered in.



Lockers

- One hallway locker per student
- Grade level per floor
- Gym locker requires a combination lock from home or purchased from school



Lunchtime at TMS!

- 28 minute separate lunch period
- Recess Opportunity
- Students may bring a lunch, purchase a hot lunch, or buy individual (a la carte) items
 - **Food delivery is not allowed for students**
- Opportunity for students to get extra help from teachers
- Phones are prohibited during lunch and any part of the school day
- F/R lunch applications must be submitted annually



Achievement- What's it all about!

Strong Core Academic Classes:

English, Mathematics, Science, and Social Studies

Rich Exploratory or Electives: Art, Music, World Languages, Technology Education, Performing Arts, Physical Education, Project Lead The Way



Support Classes

At this time, we plan to offer the following support classes:

- Math Support
- English Support
- Strategies for Success
- EL (for English Language Learners)
- Academic Support (for those who receive Special Education services)

Tappan Culture- We love ALL kids!

Student & Adult Relationships

- Classes
- Clubs
- Field trips
- Sports Teams & other
Extra-Curricular
Activities



Communication

- Email
- Voicemail
- PowerSchool
- Schoology
- Thursday Thing (PTSO)
- School Messenger
- Conferences
- Parent Involvement Days
- Principal's Monthly Updates



Tappan Athletics and Clubs



After School Sports + Clubs

6th Grade Sports resemble intramurals:

- No tryouts, no cuts - all students welcome to participate
- Fewer games than 7th/8th, no score is kept

Visit our Athletics Website here:

<https://sites.google.com/aaps.k12.mi.us/tappan-athletics/home>

Students must have a physical examination form on file in order to participate in any sport.

6th Grade Sports May Include...

Season 1

Sept - Oct

Cross Country

Soccer

Field Hockey

Season 2

Nov - Dec

Wrestling

Girls Basketball

Season 3

Jan - Feb

Synchro

Boys Basketball

Season 4

March - April

Swimming

Volleyball

Season 5

May - June

Track

Baseball

Softball

Tennis

Tappan Clubs May Include...

Gaming

Art Club

Frisbee

Cheer Club

Gay-Straight Alliance

Homework Club

Chess Club

Mariachi Club

Newspaper

Drama

Math Club

Salmon Club



Important Information from Your Tappan Counselors



Counselor Assignments 2023-24

Christa Dolan – Grade 6

dolanc@aaps.k12.mi.us

Gwen Bonnee – Grade 7

bonnee@aaps.k12.mi.us

Meagen Hudson – Grade 8

hudsonme@aaps.k12.mi.us



Tappan Counseling Department

Michigan Comprehensive Guidance and Counseling Program

- Guidance Curriculum
- Responsive Services
- Individualized Planning
- Systems Support



Schedule Scenarios

Music Student 4 exploratories

1	English
2	Math
3	Music/PE OR Music/Music (All year)
Lunch	
4.	Advisory
5	Social Studies
6	Science
7	Exploratory (changes every quarter)

Non-Music Student 8 exploratories

1	English
2	Math
3	Exploratory (changes every quarter)
Lunch	
4.	Advisory
5	Social Studies
6	Science
7	Exploratory (changes every quarter)

Elective Wheel Rotation



- Two elective hours each day (3rd & 7th periods)
- Music 4 quarters per year (8 total possible slots)

3rd Hr.	1st quarter	2nd quarter	3rd quarter	4th quarter
---------	-------------	-------------	-------------	-------------

7th Hr.	1st quarter	2nd quarter	3rd quarter	4th quarter
---------	-------------	-------------	-------------	-------------

- Music (band, orchestra, and choir) are year long and run during elective hours, so music students receive 4 exploratories versus the 8 for non-music students.
- Exploratory Wheel (Art, P.E., French, German, Spanish, Latin, PLTW, and Performing Arts) are 9 week courses

Elective Wheel Rotation



- Two elective hours each day (3rd & 7th periods)
- Music students will have music + 4 exploratory classes
- Non-music students will have 8 exploratory classes

3rd Hr.	1st quarter	2nd quarter	3rd quarter	4th quarter
---------	-------------	-------------	-------------	-------------

7th Hr.	1st quarter	2nd quarter	3rd quarter	4th quarter
---------	-------------	-------------	-------------	-------------

- Music (band, orchestra, and choir) are year long and run during elective hours, so music students receive 4 exploratories versus the 8 for non-music students.
- Exploratory Wheel (Art, P.E., French, German, Spanish, Latin, PLTW, Performing Arts) are 9 week courses.

Feeder School Visits

5th Grade Presentations for course requests will occur in the next few weeks:

- Burns Park
- Angel
- Pattengill
- Allen



Tappan Curriculum/ Enrichment

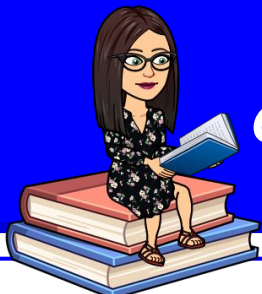
Example of a 6th Grade Schedule

1. World Geography
2. Earth Science
3. A. Band/Orchestra alternating
w/ Physical Ed
B. Choir every day
C. Exploratory*
4. Lunch & Advisory
5. Language Arts
6. Mathematics
7. Exploratory*

*Exploratory classes are Art, Project Lead
The Way, Physical Education, World
Language, Performing Arts

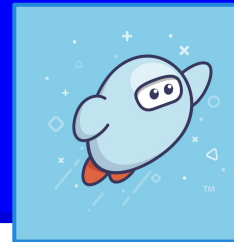
General 6th Grade Information

- **Classes are 54 minutes**
- **Passing is 5 minutes**
- **There are teams in 6th Grade**
- **Advisory is 24 minutes**
- **Class sizes are 25-31 max**



6th Grade English Language Arts Areas of Study

Rebecca Lee



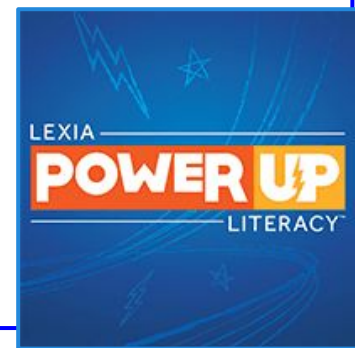
- **Word Study**-working on building vocabulary through reading informational text and studying greek and latin roots.
- **Creative Writing**- beginning to use sensory details to make their writing more descriptive
- **Argumentative Writing**- students will become familiar with writing claims, Evidence, and Reasoning
- **Research Writing**-Learning how to use credible sources to support their evidence and also learning how to cite them

- **Independent Reading**-working on stamina, metacognition, and connections to the text
- The following genres provide opportunity to research information, develop stamina, and use technology to present to their peers.

Folktale Genre

Adventure Genre

Fantasy Genre



Math - Erin Borges

Connected Mathematics 3, or **CMP3**, is an inquiry-based mathematics program for Grades 6-8. It helps students actively focus on math problem solving, reasoning and proof, communication, representation, and connections.



Grade 6 Units

Prime Time Factors & Multiples

Number theory, including factors, multiples, primes, composites, prime factorizations, order of operations

Covering & Surrounding:

Two-Dimensional measurement

Area and perimeter, area and perimeter of polygons, surface area and volume of rectangular prisms

Variables & Patterns: Focus on Algebra

Variables, expressions, equations, inequalities, representations in tables, graphs and equations

Comparing Bits & Pieces: Ratios, Rational Numbers, and Equivalence

Ratio, unit rate, rate tables, rational numbers, decimals, percents, equivalence, absolute value

Decimal Ops: Computing with Decimals and Percents

Addition, subtraction, multiplication, and division of decimals

Data About Us: Statistics and Data Analysis

Analysis of data distributions, including measures of center (mean, median, mode) and variability (range, interquartile range)

Let's Be Rational: Understanding Fraction Operations

Addition, subtraction, multiplication, and division of fractions

Launch

- Connecting to prior knowledge
- Presenting the challenge

Explore

- Students use multiple strategies to explore interesting & challenging problems

Summary

- Discussion of strategies and results
- Connecting mathematical ideas

Math Enrichment and Support-

- Math Counts Club (Nov- Feb)

- After school club that gives students in grades 6-8 the opportunity to play fun math games in a social environment

- Math Support:

- Quarterly elective class for students who want/need additional support in math

Testing Out of Math

- Register online via the district “Testing Out” website
- Testing will take place in the spring
- Students who are new to the district will test during the first week of school



Tappan Science: Jonathan Paddock

- AAPS has recently adopted a new middle school science curriculum called **OpenSciEd**
- This follows an integrated approach to teaching the science content across the 3 middle school grade levels.
- The rollout of the new curriculum will be completed during the 2022-2023 school year.

The image features six vertical test tubes arranged in a row. Each tube contains a different colored liquid: red, orange, yellow, green, blue, and purple from left to right. Small, semi-transparent bubbles of the same color as the liquid are scattered throughout each tube, giving the impression of a chemical reaction or effervescence. The test tubes have white caps at the top. The background is plain white.

**The best
way to learn
science is by
doing science!**

What does “doing science mean?”

- **Making observations of everything around us (viewing phenomenon)**
- **Asking questions based on our observations**
- **Designing ways to investigate our questions (how can I collect reliable data that will help to answer my questions?)**
- **Making claims supported by evidence and reasoning.**

Example of a Science Unit: Sound

Unit Phenomenon: a truck speaker makes a nearby window shake.

Unit Question: How is sound made, how does it travel, and how can it cause something at a distance to move?

Investigations: explore how instruments make noise, use lasers to show the small vibrations objects have when making sound, test whether sound can travel through a vacuum chamber, use simulations to visualize how sound energy moves through matter, investigate how changing the vibration of the sound source transfers different amounts of energy to a sound receiver, and many more!

Skills: asking questions, modeling, communicating results, working collaboratively with peers, looking for mathematical patterns, and more!



TAPPAN MIDDLE SCHOOL



WORLD GEOGRAPHY

6th Grade Introduction

Scott Opfermann



OUR GOAL



To encourage students to view current events and issues in the context of this **complicated relationship** to develop **critical thinking skills** that can equip them with an ability to analyze **real-world problems that need solutions.**



WHAT WILL WE LEARN?

Units of Study

- Foundations of Geography
- The World in Spatial Terms
- Population and Migration
- Culture
- Human-Environment Interaction
- Economics and World Trade
- Civics, Government, and Global Politics



HOW WILL WE LEARN IT?



DIMENSION 2

Applying
disciplinary
concepts and tools



DIMENSION 3

Evaluating sources
and using evidence



DIMENSION 1

Developing
questions and
planning inquiries



COLLEGE, CAREER & CIVIC LIFE
C3 FRAMEWORK
FOR SOCIAL STUDIES STATE STANDARDS



DIMENSION 4

Communicating
conclusions and
taking informed
action



WHY SHOULD WE LEARN IT?

- Foster global community and citizenship
- Increase cultural competence
- Heighten critical thinking and analysis skills
- Raise awareness around complex issues and current events



World Languages- Jen Shaw

- Tappan is the only AAPS middle school to offer 4 languages:
 - Latin, Spanish, German, and French
- 6th grade
 - Assigned 9-week exploratories to provide a taste of several languages
 - Students who take a music often receive 1-2 languages
 - Students who do not take a music usually receive 2-4 languages



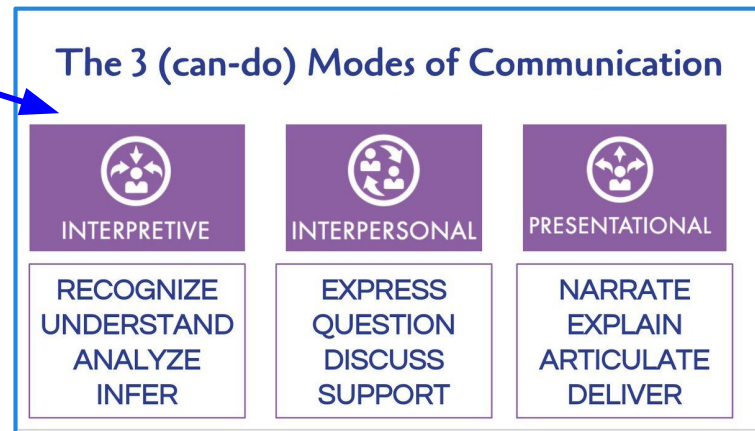
World Languages- Jen Shaw

- Aligns with national and state standards
- Focus on the 5cs, global awareness, and citizenship
- Understanding people and culture is key
 - Communication
 - Culture
 - Connections
 - Comparing similarities and differences
 - Exploring language communities nearby and around the world



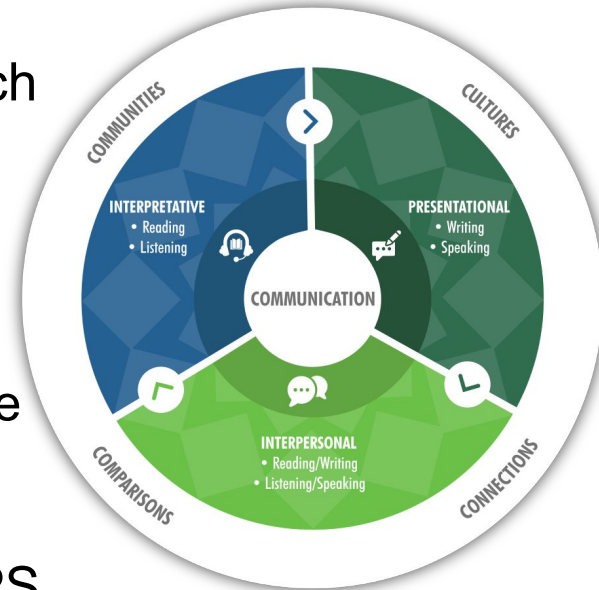
World Languages- Jen Shaw

- Focus on the 3 modes of communication
- Key literacy skills through **interpretive listening and reading** of authentic texts
 - Cognates
 - Guessing meaning from context
 - Main idea and supporting details
 - Visual cues and text features
- Focus on functional communication over grammatical perfection
- No more “I took # years of _____ and I can’t say anything.” Students walk away with novice ability to read/listen to/speak/write



World Languages- Jen Shaw

- 6th grade placed randomly to provide taste of different programs and teachers
- 7th grade: Students may select 1-2 languages, each one semester long (18 weeks)
- 8th grade
 - Opportunity to earn high school credit
 - Year-long course, same as HS content
 - Conversations at novice level increasing to novice high/intermediate low by end of 8th grade (for modern languages)
- 2 years of the same language are required for AAPS graduation (so 8th grade counts as the 1st official year of HS credit)



Instrumental and Vocal Music- Joseph Alocer

Band

- Lauren Stout stoutl@aaps.k12.mi.us
- Craig Beery beeryc@aaps.k12.mi.us

Orchestra

- Joseph Alcocer alcocerj@aaps.k12.mi.us
- Eddie Hasspacher hasspacherj@aaps.k12.mi.us

Choir

- Sarah Paquet paquets@aaps.k12.mi.us



6th Grade Music Schedule- Joseph Alocer

Choose from the following classes:

- Band alt Orchestra, Band alt Choir, Band alt PE
- Orchestra alt Band, Orchestra alt Choir, Orchestra alt PE
- Choir alt Band, Choir alt Orchestra, Choir alt PE
- A day and B day groups
- A Day Mon/Thurs and B Day Tues/Fri, Wed alternates
- Class rotations schedules based on instruments. Please be accurate on fifth grade music forms!

EXAMPLE “A” MUSIC SCHEDULE

Monday	Tuesday	Wednesday	Thursday	Friday
A	B	A/B	A	B
Music	PE	Music (A) PE (B)	Music	PE

Band Instruments- Joseph Alocer

- **Rent** or **purchase** your own: Flute, Clarinet, Alto Sax, Trumpet, Trombone, Percussion equipment. These travel back and forth between school and home daily.
- For most students, Tappan provides: French Horn, Baritone/Euphonium, Tuba, Oboe, Bassoon, Tenor Sax, Bari Sax
- School-owned instruments are available to any students with demonstrated financial need (ex: free/reduced lunch). See your music teacher for more information.
- No one is denied the opportunity to participate for any reason.
- For more information or if you need assistance finding an instrument, please email Ms. Stout at stoutl@aaps.k12.mi.us

String Instruments- Joseph Alocer

- All students are expected to RENT a high-quality stringed instrument. Preferably from a local string shop (ex. Shar Music)
- Tappan Cello and Basses are available for student use during class. The rental is used for at-home practice and concerts.
- Violins and Violas travel to and from home daily.
- School-owned instruments are available to students with demonstrated financial need. See your music teacher for more information.
- No one is denied the opportunity to participate for any reason.
- For more information, please email Mr. Alcocer at alcocerj@aaps.k12.mi.us



Why be a part of music at Tappan? Joseph Alocer

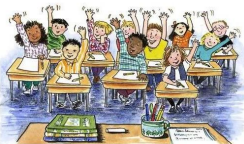
- Supportive & formative experience for middle school students
- Tappan ensembles excel
- Music classes develop fundamental musicianship, instrument technique, and ensemble skills
- Be a part of something that goes beyond middle and high school
- Create lifelong relationships



Spectrum of services and programming for students with an IEP

Teacher Consultant

Students are fully integrated into GE classes and meet with a teacher consultant weekly to organize, prioritize and address IEP goals.



In-Class (Push-in) Service Model

Students are fully integrated into GE classes. Resource teachers collaborate with GE teachers and provide direct support in common core classes based on IEP goals.



Academic Support

An elective class which students are placed thru the IEP. It is designed to address IEP goal work, improve student academic skills, meet with ancillary staff & assist students in meeting grade level expectations.



Self Contained

Students who are struggling socially/emotionally are placed thru the IEP process .



Teacher Consultants and Teacher Assistants also support SE students in general education classes.

Ancillary Support Services

Speech & Language

School speech-language pathologists diagnose, treat, and provide consultative support services for students with speech, language, and social communication disorders that adversely affect their access to education. Therapy is focused on improving oral expression, speech articulation, pragmatic language skills as well as comprehension of language.

Social Work

School Social Workers are trained mental health professionals who can assist with mental health concerns, behavioral concerns, positive behavioral support, academic, and classroom support, consultation with teachers, Families, and administrators as well as provide individual and group counseling/therapy.

Occupational Therapy

Addresses physical, cognitive, psychosocial, and sensory components of performance within the school setting focusing on reducing barriers to academics, play, leisure, social participation, self-care, transitions, and work skills.



S.T.E.M. EDUCATION

Middle school is a time of exploration, a time when students are figuring out what they're passionate about today and how that relates to who they'll become tomorrow.

During this transitional time, PLTW Gateway's five units empower students to lead their own discovery. The hands-on program boosts classroom engagement and excitement, drives collaboration, and inspires "aha! moments" and deep comprehension. And as students engage in PLTW's activities in computer science, engineering, and biomedical science, they see a range of paths and possibilities they can look forward to in high school and beyond.

PLTW tentative classes offered at Tappan are:

Design & Modeling - 6th Grade (9 week class)

Automation & Robotics - 7th Grade (9 week class)

Computer Science for Innovators and Makers - 7th Grade (9 week class)

Medical Detectives - 7th Grade (9 week class)

Energy & the Environment - 8th Grade (9 week class)



Visual Arts



Exploratory Arts, for 6th graders, is a 9 week course that is broken into 3 main units: drawing, sculpture, and painting.

These units preview individual, medium specific, 9 week classes that can be chosen as electives at the 7th and 8th grade levels.

Realistic, abstract and non-objective styles are all included.

The majority of class time is spent in the artistic process, but aesthetics, art history and the essentials of critique are also covered.

News You Can Use...

PowerSchool

Parents & Students will be provided with login access to PowerSchool:

- Check Academic Standing/Grades
- Review Assignment Completion/Missing Work
- Check Attendance
- Email Teachers
- Set automated reminders to your personal email to track grades & attendance.



5th Grade Transition Day

Friday, May 5

- In-person Spring Event
- Feeder schools visit
- Opportunity to meet future teachers, staff, and classmates
- Chance for students to learn more about Trojan Nation



Tappan's Information Day

August 2023

Families and students will be provided grade level times to bring their child to Tappan to:

- ❖ Recieve student schedule
- ❖ Find assigned locker
- ❖ Meet administration and available staff
- ❖ Tour the school



Tappan School's Website

<https://www.a2schools.org/tappan>

Translate ▼ District Home Choose School ▼ Site Manager My Account ▼

SEARCH



TAPPAN MIDDLE SCHOOL
Ann Arbor Public Schools



Social Media

Twitter

@A2Tappan



Facebook

Tappan Middle School



Additional Questions??

Visit the following rotations!

Social Studies - Mr. Opfermann - Room 295

Math - Mr. Champion - Media Center Lab

Language Arts - Ms. Lee and Mr. DeBiasi - Room 243

Science - Mr. Paddock and Ms. Daugherty - Room 237

Special Education- Ms. Hood - Room 220

Counselor- Ms. Dolan - Counseling Suite

Athletics - Mr. Winkelseth - Media Center

Rotation Times - 7:10 pm, 7:25 pm, and 7:40 pm

Thank you for coming!
We look forward to welcoming your family
into our Tappan School Family!

A link has been provided for you to take a
virtual tour of our school. This link will also
be added to our school's website



Please join our 10-minute rotation
sessions if you have additional questions